

# MONTHLY MEMBERSHIP PROGRESS REPORT

LOCATION AUSTRALIA

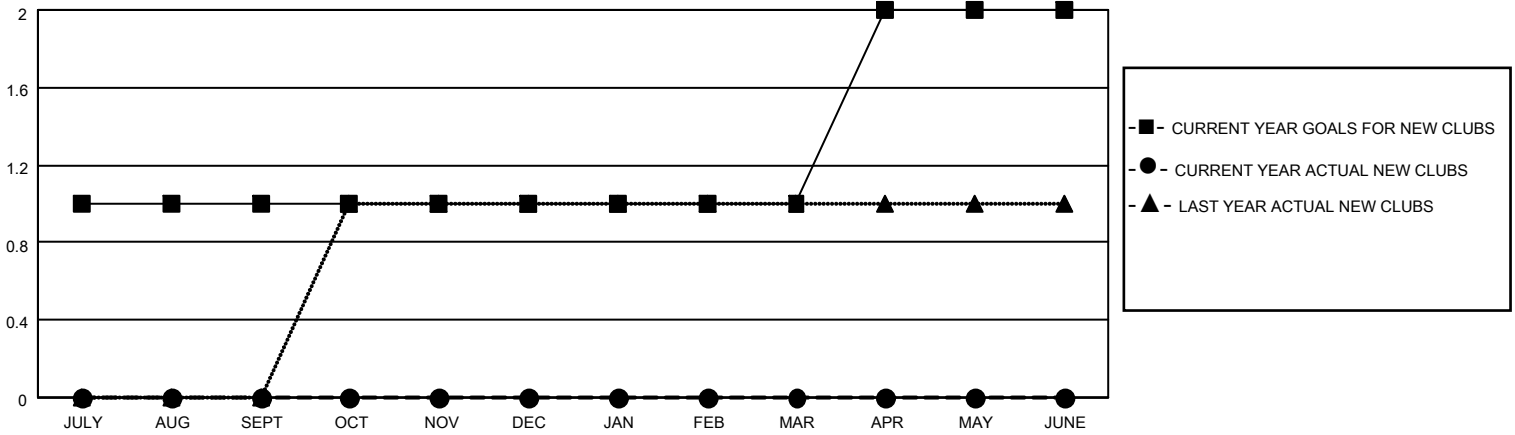
District 201V3

Results as of: 8/31/2022

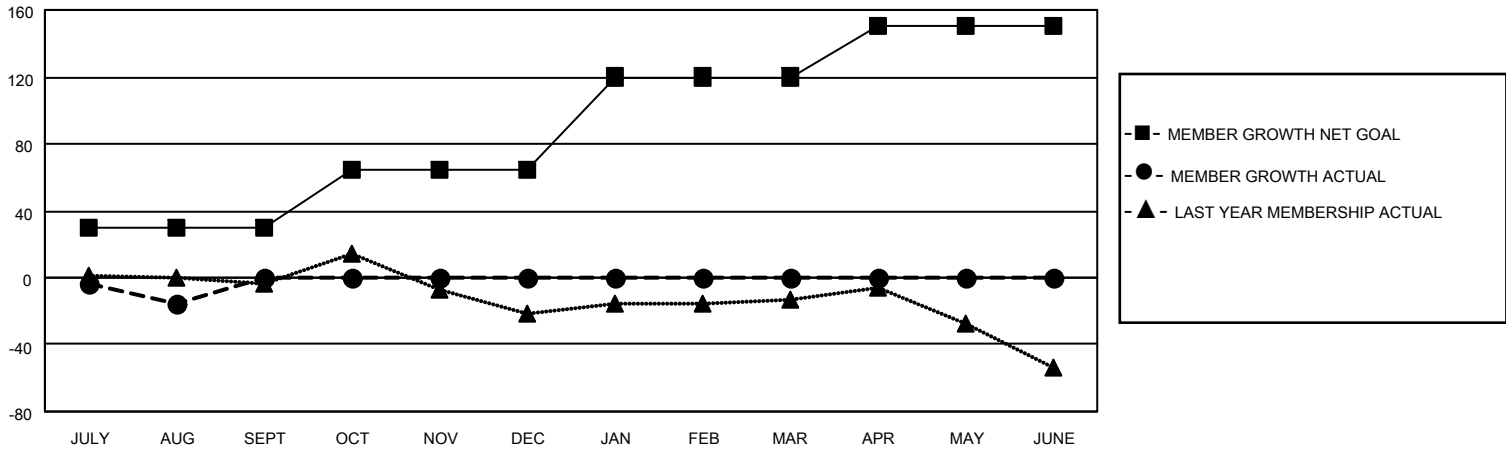
| Clubs                 |               |           |               |
|-----------------------|---------------|-----------|---------------|
| RESULTS FOR 2022-2023 |               |           |               |
| QUARTER               | NEW CLUB GOAL | NEW CLUBS | DROPPED CLUBS |
| JULY/AUG/SEPT         | 1             | 0         | 1             |
| OCT/NOV/DEC           | 0             | 0         | 0             |
| JAN/FEB/MAR           | 0             | 0         | 0             |
| APR/MAY/JUNE          | 1             | 0         | 0             |

| Members               |                        |                      |   |
|-----------------------|------------------------|----------------------|---|
| RESULTS FOR 2022-2023 |                        |                      |   |
| QUARTER               | MEMBER GROWTH NET GOAL | MEMBER GROWTH ACTUAL | DROPPED MEMBERS ACTUAL<br>(including transfers) |
| JULY/AUG/SEPT         | 30                     | 21                   | 31  |
| OCT/NOV/DEC           | 35                     | 0                    | 0   |
| JAN/FEB/MAR           | 55                     | 0                    | 0   |
| APR/MAY/JUNE          | 30                     | 0                    | 0   |

**GOALS AND ACTUAL NEW CLUBS CUMULATIVE**



**GOALS AND ACTUAL MEMBERS CUMULATIVE**



**DROPPED CLUBS: 1**

**9 CLUBS OF 68 ADDED 1 OR MORE NEW MEMBERS**

**GENDER DISTRIBUTION**

|                      |              |
|----------------------|--------------|
| MALE                 | 831 (65.85%) |
| FEMALE               | 431 (34.15%) |
| NON BINARY           | 0 (0.00%)    |
| PREFER NOT TO ANSWER | 0 (0.00%)    |

**DROPPED MEMBERS**

[CLICK HERE FOR CUMULATIVE MEMBERSHIP DATA](#)

|                |           |
|----------------|-----------|
| DECEASED       | 2         |
| CLUB CANCELLED | 0         |
| OTHER          | 29        |
| <b>TOTAL</b>   | <b>31</b> |

|                                 |     |
|---------------------------------|-----|
| TOTAL FAMILY UNIT MEMBERS       | 170 |
| FAMILY MEMBERS PAYING HALF DUES | 87  |